

# LAZER

H I G H P E R F O R M A N C E L I G H T I N G



# TOYOTA HILUX

## ROOF MOUNTING KIT FOR VEHICLES WITHOUT ROOF RAILS

---

**FITTING INSTRUCTIONS**

**ANLEITUNG**

**INSTRUCTIONS**

**INSTRUCCIONES**

## TECHNICAL SUPPORT

aaron@lazerlamps.com / sales@lazerlamps.com  
 +44 (0)1992 945601 / +44 (0)1992 677374

## WHAT'S INCLUDED

- 2x STAINLESS STEEL MOUNTING BRACKET (LH/RH)
- 1x ANTI-THEFT FASTENER SET (VARIOUS SIZES)
- 1x SPACER SET (VARIOUS SIZES)
- 4x M6X25 T30 BOLTS plus NUTS AND WASHERS
- 4x ROOF DITCH SPACERS
- 1x CABLE GROMMETS
- 1x VHB CLEANING SACHET
- 2x BUTT CONNECTORS

## DIFFICULTY LEVEL



## TOOLS REQUIRED



DRILL BIT  
6MM / 9MM



METRIC  
SOCKET SET



WIRE STRIPPERS  
AND RACHET CRIMPERS



WIRE CUTTERS



ALLEN KEY  
SIZE: 5



PHILLIPS / T-25 TORX  
SCREWDRIVER



PLASTIC  
TRIM TOOLS

## PRE-INSTALLATION CHECKS

Ensure battery is disconnected.

## HEADLINING REMOVAL



### STEP 1



Remove all grab handles from the interior of the vehicle.



### STEP 2



Remove the sun visors.



### STEP 3



Remove all interior lights.



### STEP 4

Remove the cover from the sensor located on the windscreen.



### STEP 5



Remove seat belts from the 'A', 'B' and 'C' Pillars.

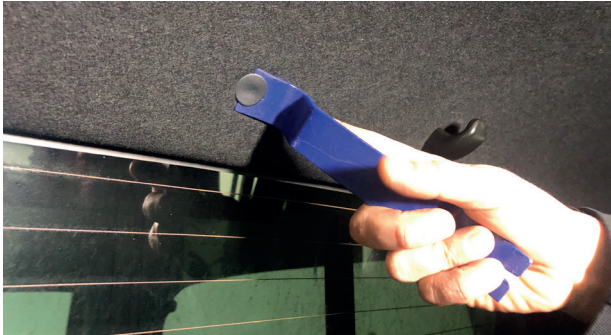
## HEADLINING REMOVAL CONTINUED



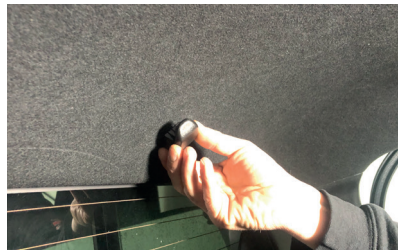
### STEP 6



Remove the 'A' and 'B' pillar trims.



### STEP 7



Remove any other retaining clips in the headlining.



### STEP 8

Pull down the door rubber seals.



### STEP 9

The headlining can now be dropped to allow access to the underside of the vehicles roof.

## MOUNTING YOUR LIGHT



### STEP 1

Using marking tape or similar, mark 100mm from the windscreen, along the roof ditch moulding on both sides of the vehicle.



### STEP 2

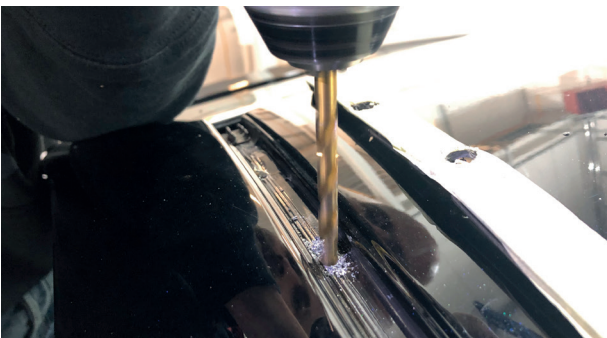


Place the bracket behind where you have marked the 100mm and then mark out the screw holes.



### STEP 3

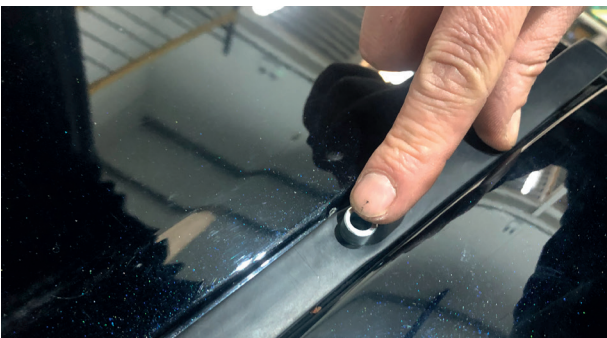
Drill the 2x 10mm holes where you have just marked through the roof ditch moulding.



### STEP 4

Move the roof ditch moulding out of the way and then drill a 6mm hole, drill all the way through the roof of the vehicle.

**(Extreme care must be taken when drilling the holes to ensure you don't drill through the side airbag).**



### STEP 5

Place the supplied roof ditch spacers in the mounting holes you have just drilled in the roof ditch moulding.

## MOUNTING YOUR LIGHT CONTINUED



### STEP 6



Using the supplied bolts, nuts, and washers mount the roof brackets (countersink pointing outwards).

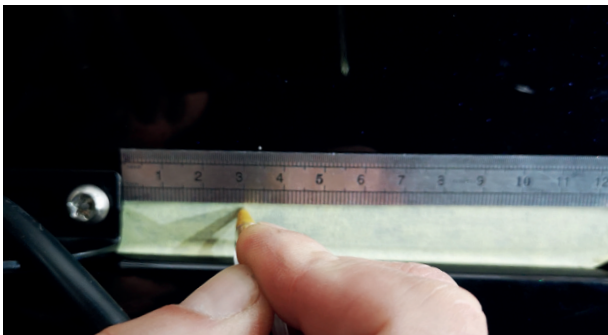
(We recommend using sealant around the washers and bolt for extra water tightness.)



### STEP 7

Using the supplied anti-theft fasteners and spacers, mount your light bar to both brackets.

## WIRING (PART 1)



### STEP 1

Using masking tape or similar, mark 30mm from the back of the bracket, this is where you will drill the hole for cable entry.



### STEP 2

Drill a 9mm hole through both the roof ditch moulding and roof of the vehicle where you have just marked.



### STEP 3

Remove the connector from the lamp to allow you to feed through the hole you have just drilled.



**STEP 4**

Feed the cable from the lamp through the supplied cable grommet.



**STEP 5**

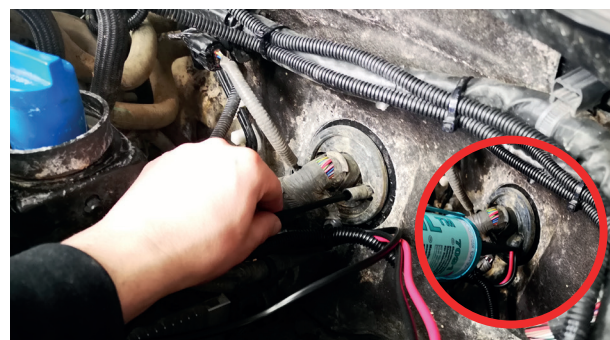
Lift the roof ditch moulding and feed the lamp cable and grommet through the drilled cable entry hole in the roof ditch moulding and apply sealant before placing in the roof (VHB wipe supplied for preparing areas before using sealant).

**WIRING (PART 2) - WITH SWITCH, NON E-MARKED LAMPS (TRIPLE-R 24)**

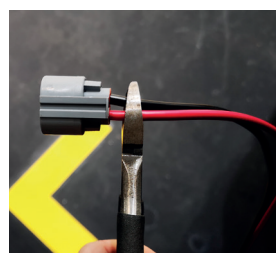


**STEP 1**

Install the relay close to the battery and connect the live and earth to the battery.

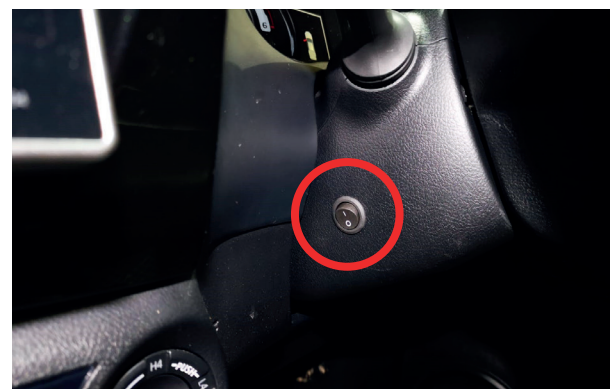


**STEP 2**



Remove Switch from the crimp terminals and cut of the lamp connector from the wiring harness.

Then route these wires through the cable grommet (we recommend sealing with sealant).



**STEP 3**



Reconnect switch to crimp terminals and locate a suitable place for mounting the switch, you will need to drill a 20mm hole to facilitate the switch. Suggested location shown (side of the steering wheel).

**For next steps please see - Wiring (Part 3)**

## WIRING (PART 2) - WITH SPLICE, E-MARKED LAMPS (LINEAR-42)



### STEP 1

Install the relay and connect the live and earth to the battery, the high beam trigger is taken from the **white** wire at the back of the highbeam bulb.



### STEP 2



Route the rest of the harness wiring through the factory grommet (we recommend sealing with sealant). The cable will fall into the left footwell.

## WIRING (PART 3)



### STEP 1

Route the harness lamp cable up the A-pillar while securing with cable ties.



### STEP 2

Connect the the wiring harness to the lamps harness using the supplied heat-shrink butt splices.

## INSTALLATION CHECKS

Test light bar is working fully before re-assembling vehicle.





# LAZER

H I G H P E R F O R M A N C E L I G H T I N G

**Thank you for choosing a Lazer Lamps product.**

**Vielen Dank dafür, dass Sie sich für ein Produkt von Lazer Lamps entschieden haben.**

**Merci pour choisir un produit de Lazer Lamps.**

**Gracias por la seleccion de productos de Lazer Lamps.**