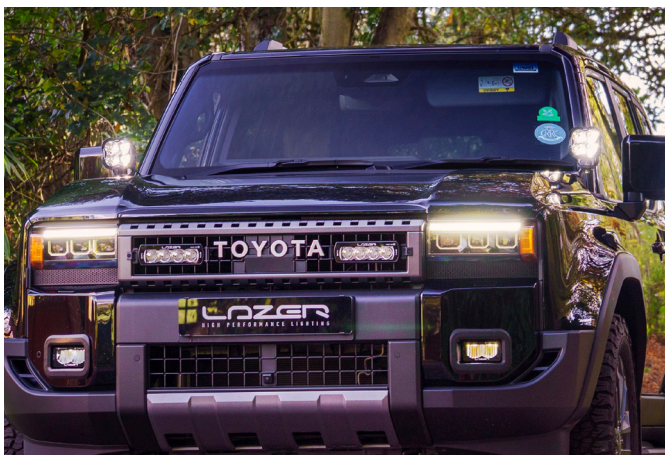


TOYOTA LAND CRUISER 250 (2024+)

A-PILLAR MOUNTING KIT INSTRUCTIONS



WHAT'S INCLUDED

- Left/Right Lamp Brackets
- Left/Right Entry Hole Covers
- Cutting Guides
- A2 Stainless Steel Hardware

COMPATIBLE WITH

- Utility-80HD
- Utility-50
- Utility-25
- RP Spot/RP Hyperspot
- ST2

TOOLS REQUIRED

- 12mm Socket
- 13mm Socket
- Ratchet
- 10mm Spanner
- 13mm Spanner
- 17mm Spanner
- 4mm Hex
- 5mm Hex
- Trim Removal Tools
- 90° Pick
- Stanley Knife

ALSO REQUIRED (NOT INCLUDED):

- Wiring Harness
- CANNY (for High Beam Integration)

A-PILLAR KIT INSTRUCTIONS

INSTALLATION TIME **1.5 HOURS**
WIRING TIME **1.5 HOURS**

DIFFICULTY - 3 / 5



PRE-INSTALLATION CHECKS

Ensure all vehicle systems are fully operational prior to install, and directly afterwards.

A-PILLAR MOUNT INSTALLATION



STEP 1

Remove lower A-Pillar cover trim.



STEP 2

Remove small yellow clip from inner wing if left on the car.



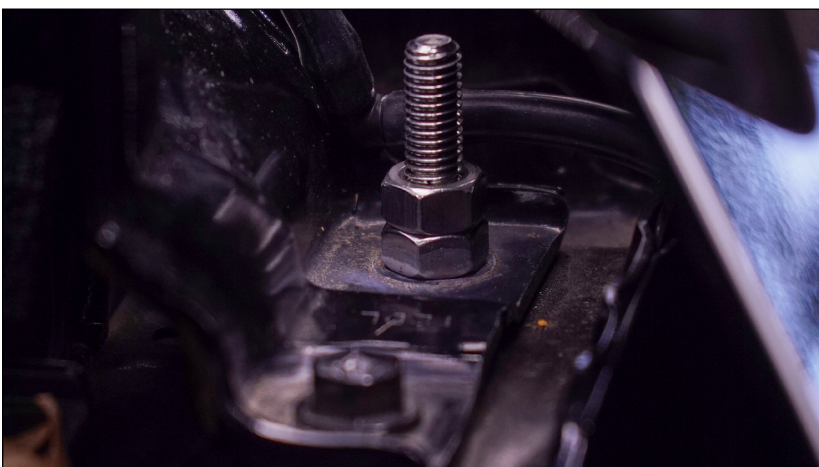
STEP 3

Remove two clips from the inner wing and remove cover.



STEP 4

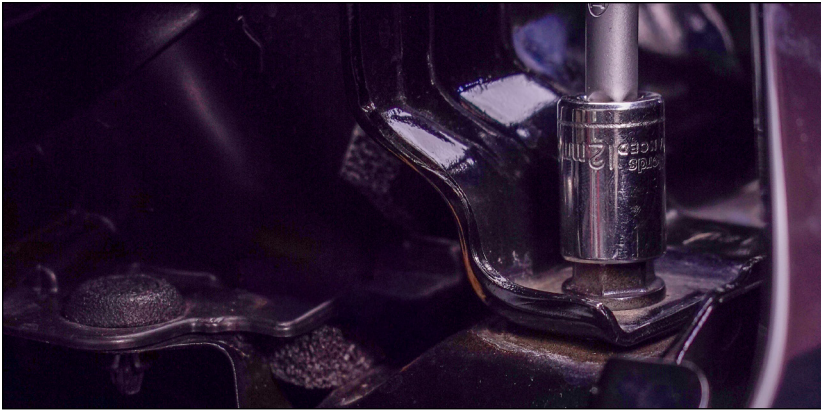
Remove lower wing cover & clips.



STEP 5

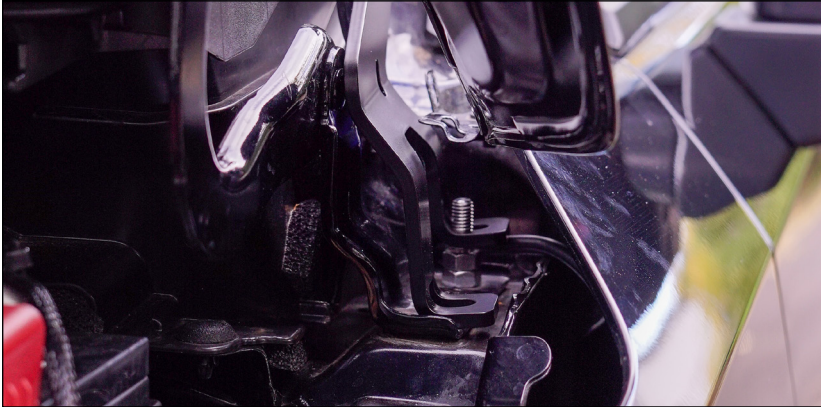
Remove rear bonnet hinge bolt and install supplied M8 stud.

NOTE: Do not remove both hinge bolts at the same time.



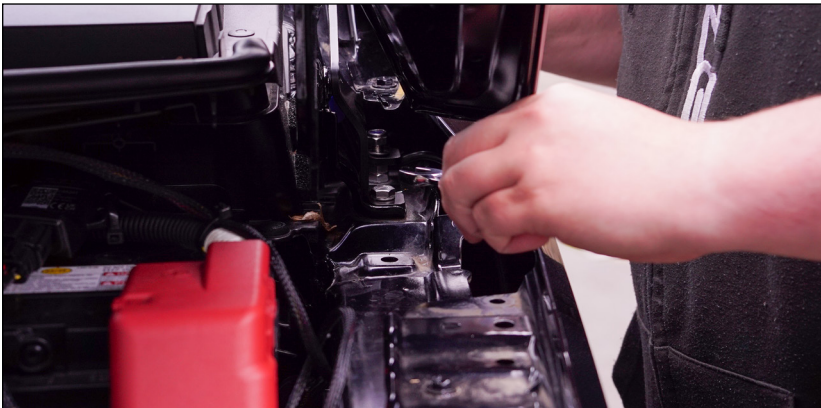
STEP 6

Once the stud is installed, remove the front hinge bolt.



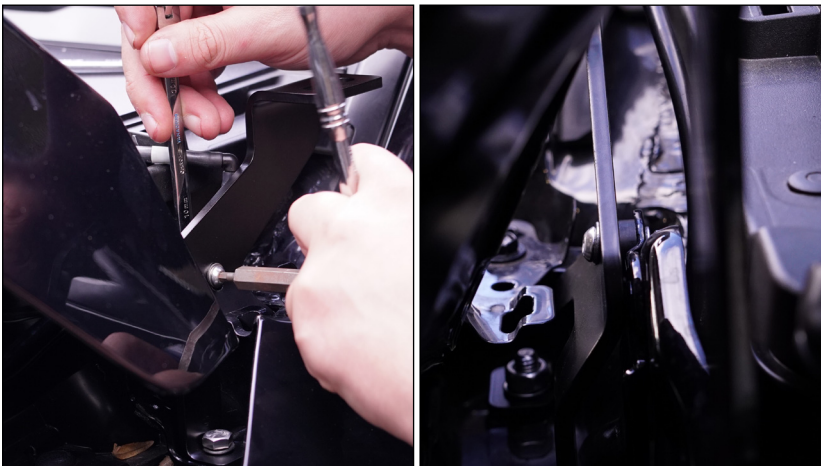
STEP 7

Insert the bracket into the gap, using the stud to locate the bracket



STEP 8

Secure the bracket in place using provided 13mm M8 stainless hardware. Bolt & washer in front hole. Nut, washer and spring washer on rear hole/stud.



STEP 9

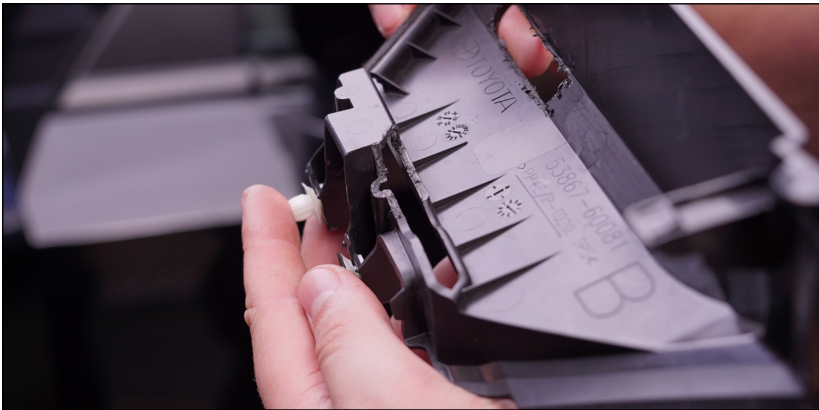
Insert M6 button head bolt through the centre of the bracket to the bonnet hinge bracket. Place nylon spacer between the two pieces of metal.

For further clarification, please see the technical diagram at the end of this document.



STEP 10

Use the cutting guides to mark out the entry holes through the top covers, and cut out with Stanley knife or similar.



STEP 11

Make an additional cut on the inside of the cover.



STEP 12

Route lamp cable into the engine bay on the inside of the bonnet hinge.



STEP 13

Refit top cover to the vehicle with the lamp wire passing between the cover and the windscreen.



STEP 14

Remove 3M VHB backing from the additional cover and stick on over bracket to cover the cut.



STEP 15

Fit lamp (RP Hyperspot used for illustration purposes) to the bracket using lamp hardware.

(NOTE: An anti-theft nut was used in this installation - Not included with the lamp as standard)



STEP 16

Refit covers and repeat for the other side.

STEP 17

Connect up lamps.

Run wiring to desired switch. It is recommended to use the available corresponding Lazer wiring kit for your product (please refer to the wiring kit product page for further wiring instructions).

